



GMT MONTHLY MEMBERSHIP PROGRESS REPORT

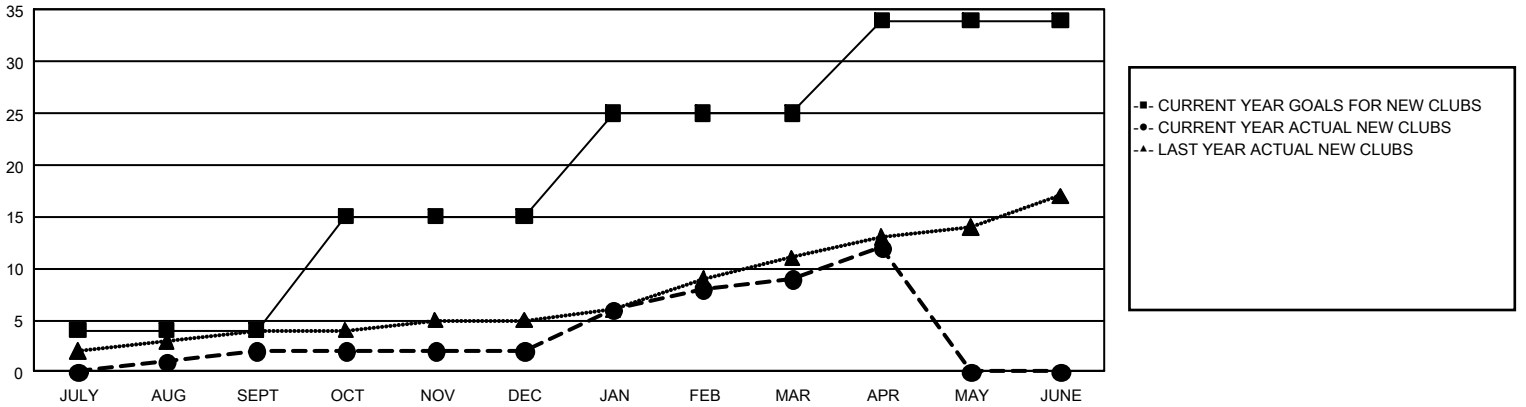
GAT Constitutional Area 2

Results as of: 4/30/2024

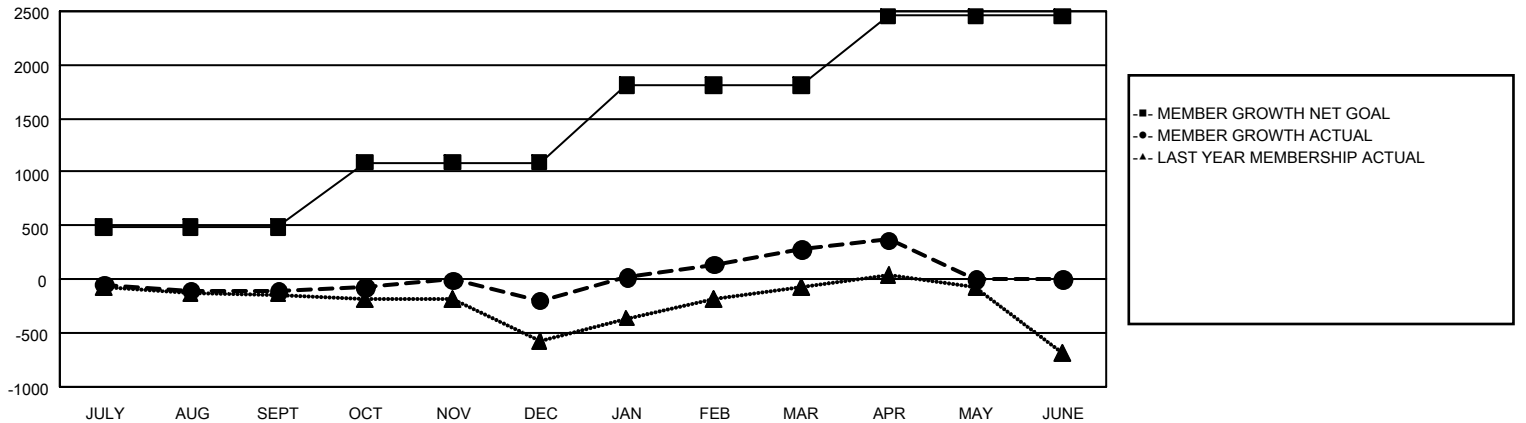
REPORT DOES NOT INCLUDE CLUBS IN UNDISTRICTED AREAS.

Clubs				Members			
RESULTS FOR 2023-2024				RESULTS FOR 2023-2024			
QUARTER	NEW CLUB GOAL	NEW CLUBS	DROPPED CLUBS	QUARTER	MEMBER GROWTH NET GOAL	MEMBER GROWTH ACTUAL	DROPPED MEMBERS ACTUAL (including transfers)
JULY/AUG/SEPT	4	2	3	JULY/AUG/SEPT	483	577	610
OCT/NOV/DEC	11	0	4	OCT/NOV/DEC	609	982	978
JAN/FEB/MAR	10	7	1	JAN/FEB/MAR	718	1,084	528
APR/MAY/JUNE	9	3	7	APR/MAY/JUNE	647	366	258

GOALS AND ACTUAL NEW CLUBS CUMULATIVE



GOALS AND ACTUAL MEMBERS CUMULATIVE



DROPPED CLUBS: 15	731 CLUBS OF 1,187 ADDED 1 OR MORE NEW MEMBERS	<u>GENDER DISTRIBUTION</u> MALE 16,638 (63.50%) FEMALE 9,555 (36.47%)
<u>DROPPED MEMBERS</u> DECEASED 320 CLUB CANCELLED 34 OTHER 2,016 <hr style="border: 0.5px solid black;"/> TOTAL 2,370	CLICK HERE FOR CUMULATIVE MEMBERSHIP DATA	TOTAL FAMILY UNIT MEMBERS 4,947 FAMILY MEMBERS PAYING HALF DUES 2,539